

Dear Parents & Students:

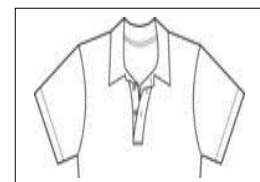
DAVID LAWRENCE JR. K-8 CENTER IS A MANDATORY UNIFORM SCHOOL. NO EXCEPTIONS. A 10 day grace period is provided at the beginning of the 2017-2018 School Year for new or transferring students to obtain uniforms.

Uniform Policy/ Elementary

- Navy blue or tan trousers (docked, cargo, shorts, capris, skorts)
- Shorts and skorts must reach mid-thigh in length
- All t-shirts and Polo shirts must be navy blue, light blue or white. Uniforms embroidered with the school crest are available in the Dolphin Depot (school store).
- Sweatshirts and jackets can be worn as long as the shirt underneath is the uniform shirt. Sweatshirts and Jackets must be solid white or solid navy blue in color. Writing, designs, slogans or pictures of any kind are not permitted. Wearing the hood while on campus is not permitted.

Uniform Policy/Upper Academy

- ✓ **Uniform style pants or shorts only** - The pants/shorts must be solid khaki or solid navy in color and appropriate in size. Pants will be belted at the waist. All shorts must be knee length (absolutely no skirts or dresses).
- ✓ **Uniform style polo shirts** - The shirts must be solid white, solid light blue, or solid navy blue in color. The polo shirt must have no more than three or four buttons and be long enough to be tucked in. The shirt must have a collar and sleeves as shown in the diagram. All undershirts must be solid white or solid navy blue. Uniforms embroidered with the school crest are available in the Dolphin Depot (school store).
- ✓ **No jeggings, sweatpants, exercise pants/shorts, stretch pants/shorts, and jeans (of any color or length)**
- ✓ **Jackets/sweaters** – Must be solid white or solid navy blue in color. Writing, designs, slogans or pictures of any kind are not permitted. Wearing the hood while on campus is not permitted.
- ✓ **Closed-toe shoes** – must be secured at the heel.
- ✓ **Belts** – must be a solid color. No large buckles or metal studs are permitted.



Parents will be called if the student is not properly dressed. Appropriate clothing will need to be brought to the office in order for the child to return to class. Again, this policy is being implemented for safety and security.